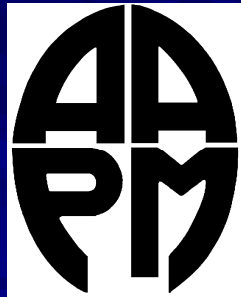


2007 Summer School



Minneapolis



Table 2-3 Occupancy factors (T) for non-occupationally exposed personnel¹

T	Type of area
1	Full Occupancy: work areas such as offices, shops, laboratories, children's play areas, occupied nearby buildings, living quarters, wards, nurses' stations
1/4	Partial Occupancy: corridors, rest rooms, elevators using operators (I have not seen one of these in years), unattended parking lots
1/16	Occasional Occupancy: waiting rooms, toilets, stairways, unattended elevators, janitors' closets, outside areas used only for pedestrians or vehicular traffic

¹From NCRP Report No. 49 (NCRP 1976).

Occupancy factors (T) have been suggested by the NCRP (NCRP 1976) for the case where values are not available. Table 2-3 presents the recommended occupancy factors.

The values shown in Table 2-3 can be used in calculating the barrier transmission factor required to reduce the exposure from the source to 0.02 mSv per week or 1.0 mSv per year in uncontrolled areas, but a T value of one is used to evaluate the barrier transmission needed to ensure that nonoccupational personnel are not exposed to more than 0.02 mSv in any one hour of operation.

Excerpt from *Shielding Techniques* 2nd Ed.

Barrier Description	East Controlled	East Controlled	South Public	West Public	West Public
Occupancy Designation	Controlled	Controlled	Public	Public	Public
Max Perm Dose X _y (Rem/wk)	0.0100	0.0100	0.0019	0.0019	0.0019
Use Factor U	1	0.25	1	1	0.25
Occupancy Factor T	1	1	0.0625	0.0625	0.0625
distance from source d (m)	8	8	5.4	5	5
Barrier Type	Secondary	Primary	Secondary	Secondary	Primary
Attenuation Factor B	0.00640	0.00003	0.00897	0.00769	0.00003
TVL needed	2.2	4.6	2.0	2.1	4.5
TVL (in. concrete per mfg.)	13.0	17.5	13.0	13.0	17.5
Minimum Thickness concrete (in.)	28	80	27	27	79

Barrier Considerations

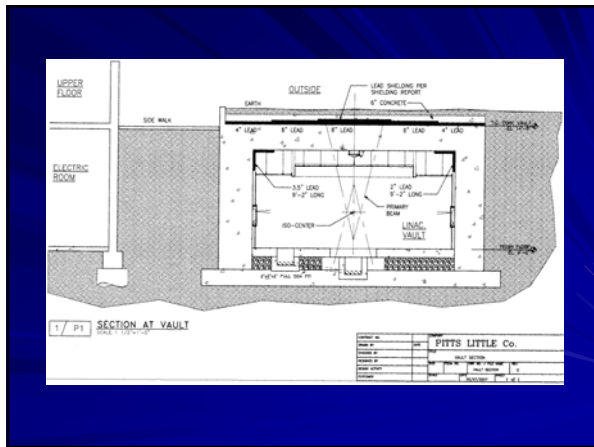
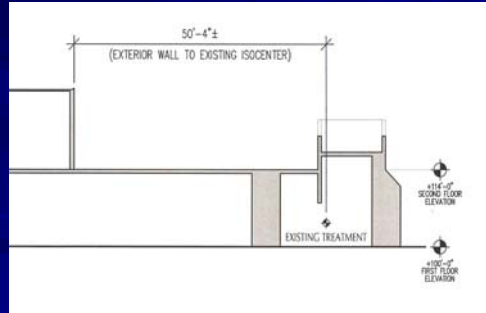
Problem



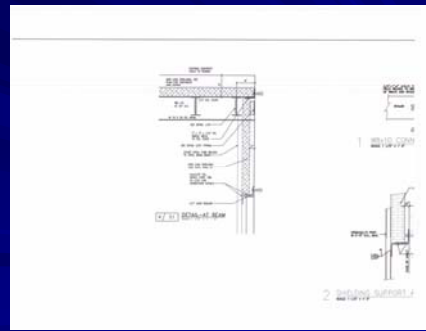
Solution



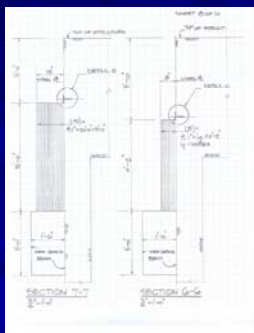
12" Roof Deck



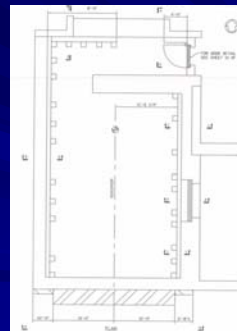
Grade



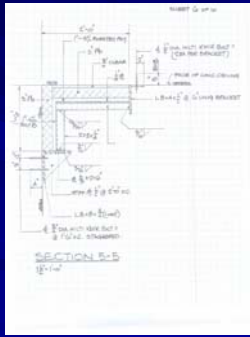
Grade



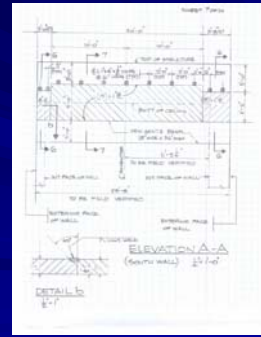
Grade



Grade



Grade



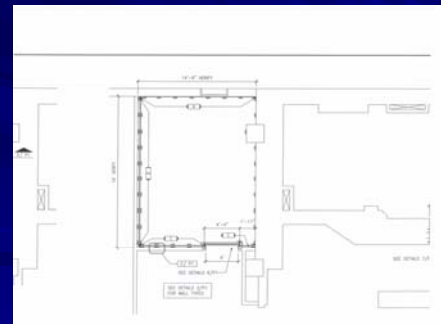
HDR

HDR



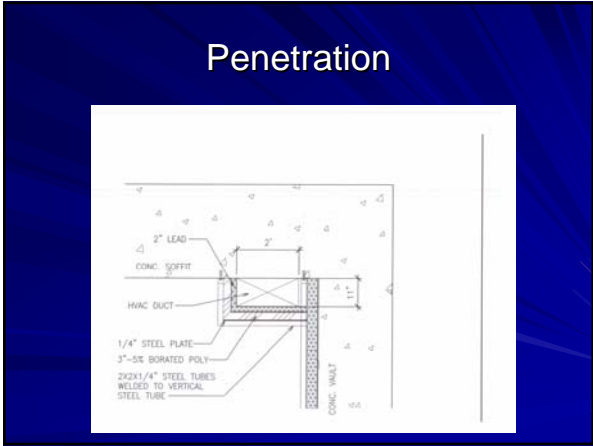
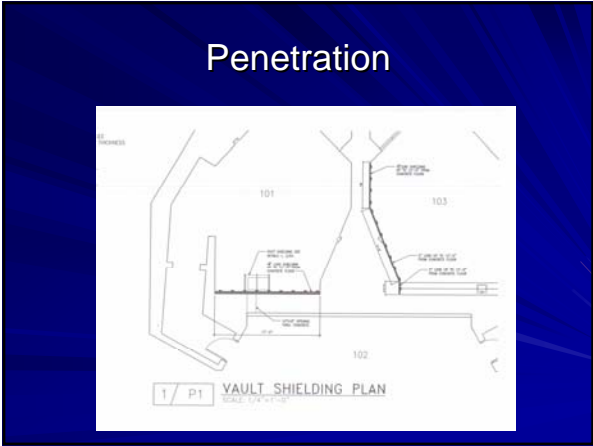
HDR

HDR

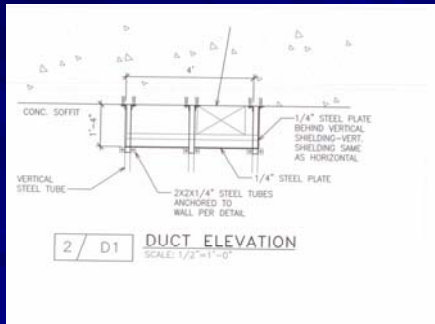




Cable Penetration



Penetration



Cable Penetration



Cable Penetration



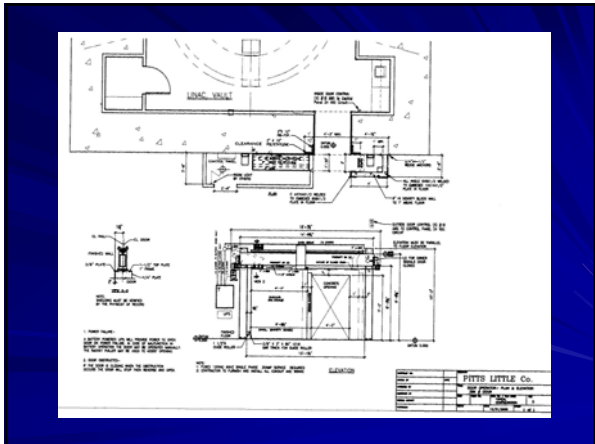
Cable Penetration



Cable Penetration



Sliding Doors



Embedded Jamb Shielding

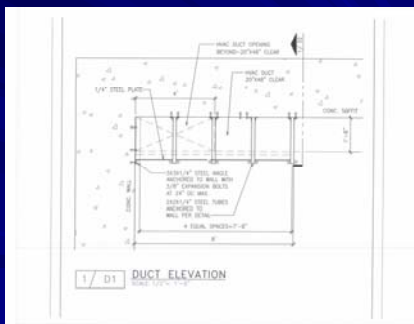


Sliding Door

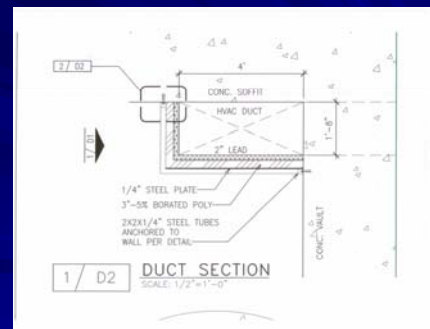


Duct Shielding

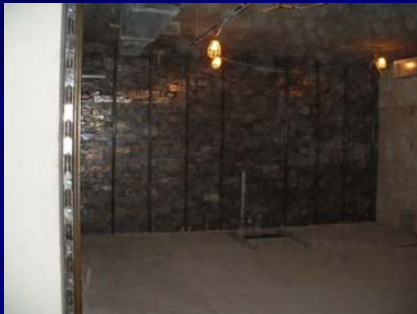
Duct Shield



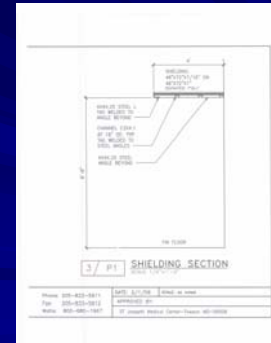
Duct Shield



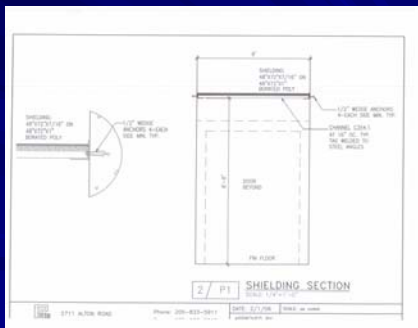
Brick Wall



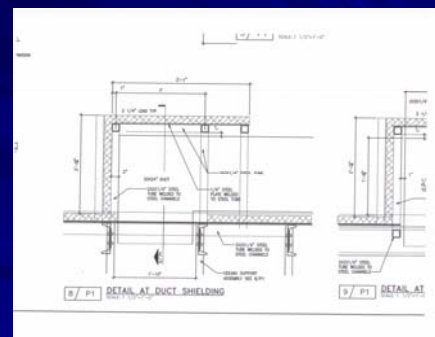
Duct Shield



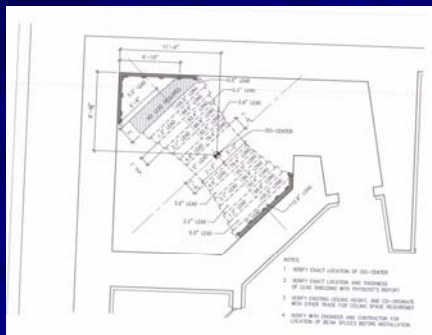
Duct Shield



Duct Shield



Rotate Machine



Rotate Machine

